

Dark Matter Deficient Galaxies And Their Member Star Clusters Form Simultaneously During High-velocity Galaxy Collisions In 1.25 pc Resolution Simulations

JOOHYUN LEE ¹, EUN-JIN SHIN ¹ AND JI-HOON KIM ^{1, 2}

¹*Center for Theoretical Physics, Department of Physics and Astronomy, Seoul National University, Seoul 08826, Korea*

²*Seoul National University Astronomy Research Center, Seoul 08826, Korea*

ABSTRACT

It has been a mystery how the diffuse dwarf galaxies that are deficient in dark matter — such as NGC1052-DF2 and NGC1052-DF4 — have formed. Along with their luminous member globular clusters (GCs), the so-called dark matter deficient galaxies (DMDGs) have challenged observers and theorists alike. Here we report a suite of galaxy collision simulations using the adaptive mesh refinement code ENZO with 1.25 pc resolution, which demonstrates that high-velocity galaxy collisions induce the formation of DMDGs and their star clusters (SCs) simultaneously. With numerical resolution significantly better than our previous study (80 pc in [Shin et al. 2020](#)), we resolve the dynamical structure of the produced DMDGs and the detailed formation history of their SCs which are possible progenitors of the DMDG’s member GCs. In particular, we show that a galaxy collision with a high relative velocity of $\sim 300 \text{ km s}^{-1}$, invoking severe shock compression, spawns multiple massive SCs ($M_{\star} \gtrsim 10^6 M_{\odot}$) in $< 150 \text{ Myr}$ after the collision. At the end of the $\sim 800 \text{ Myr}$ evolution in our fiducial run, the resulting DMDG of $M_{\star} \simeq 3.5 \times 10^8 M_{\odot}$ hosts 10 luminous ($M_V \lesssim -8.5 \text{ mag}$), gravitationally bound SCs with a line-of-sight velocity dispersion 11.2 km s^{-1} . Our study suggests that DMDGs and their luminous member SCs could form simultaneously in high-velocity galaxy collisions while being in line with the key observed properties of NGC1052-DF2 and NGC1052-DF4.

Keywords: galaxies: formation — galaxies: evolution — galaxies: star formation — galaxies: star clusters: general — cosmology: theory — methods: numerical

1. INTRODUCTION

At the center of the intense debate are the properties and the formation mechanism of the two recently discovered ultra diffuse dwarf galaxies, NGC1052-DF2 and NGC1052-DF4 (hereafter DF2 and DF4, respectively). Upon the spectroscopic study of their member globular clusters (GCs), surprisingly small velocity dispersions have been unearthed compared to what is normally expected by their observed stellar masses. This implies that DF2 and DF4 have very small dark matter to stellar mass ratios (dark matter deficient galaxy or DMDG; [van Dokkum et al. 2018b, 2019](#)).¹ The exceptionally large population of their luminous member GCs is also a mystery under investigation. The GC luminosity function (GCLF) of DF2 peaks at $M_V \sim -9$, approximately

1.5 mag shifted to the brighter side from the Milky Way’s GCLF ([van Dokkum et al. 2018c](#); [Ma et al. 2020a](#); [Shen et al. 2021a](#)), indicating a large number of massive GCs. Extensive spectroscopic studies on DF2 found that their stellar population is $\sim 9 \text{ Gyr}$ s old on average and that the metallicity of the main stellar body differs from that of its member GCs ([Fensch et al. 2019](#); [Ruiz-Lara et al. 2019](#)). As for the kinematics, recent studies hint that DF2 is likely a prolate rotator ([Emsellem et al. 2019](#); [Lewis et al. 2020](#)).

These observations could provide a testbed for various formation scenarios proposed for DF2 and DF4. In one of such scenarios suggested by [Silk \(2019\)](#), a “mini-Bullet cluster-like” event in a galaxy scale decouples dark matter from dissipative baryons.² The high-velocity galaxy collision induces a strong shear and shock compression in the interstellar medium (ISM), instigating the formation of DMDGs and their bright member GCs ([Silk 2019](#); [Trujillo-Gomez et al. 2020](#)). Numerical studies have demonstrated the formation

Corresponding author: Ji-hoon Kim
me@jihoonkim.org

¹ This anomalous characteristic is based on the distance measurement the accuracy of which is still under debate (see e.g., [Trujillo et al. 2019](#) and [Monelli & Trujillo 2019](#) for details, but also [van Dokkum et al. 2018a](#), [Danieli et al. 2020](#) and [Shen et al. 2021b](#)).

² Other scenarios include the tidal dwarf galaxies ([Fensch et al. 2019](#)) and the dwarf galaxies with tidally-stripped dark matter halos ([Ogiya 2018](#); [Jackson et al. 2021](#)). See [Shin et al. \(2020\)](#) for more information.

Table 1. A suite of idealized galaxy collision simulations listed with their initial configurations and the stellar mass of the most massive DMDG formed

Run name	Stellar feedback energy (10^{51} erg / $150 M_{\odot}$ of stars)	Initial gas metallicity (Z_{\odot})	Disk inclination angle (θ_1, ϕ_1), (θ_2, ϕ_2)	Disk spin relative angle	$M_{*, \text{DMDG}}$ ($10^8 M_{\odot}$)	t_{end} (Myr)
(1)	(2)	(3)	(4)	(5)	(6)	(7)
Fiducial [†]	1	1	($0^\circ, 0^\circ$), ($0^\circ, 0^\circ$)	0°	3.47 (3.72)	800 (250)
FB3	3.3	1	($0^\circ, 0^\circ$), ($0^\circ, 0^\circ$)	0°	2.76	250
FB7	6.7	1	($0^\circ, 0^\circ$), ($0^\circ, 0^\circ$)	0°	1.46	250
FB10	10	1	($0^\circ, 0^\circ$), ($0^\circ, 0^\circ$)	0°	-	50
Low-metal [‡]	1	10^{-2}	($0^\circ, 0^\circ$), ($0^\circ, 0^\circ$)	0°	0.90	250
Retrograde	1	1	($0^\circ, 0^\circ$), ($180^\circ, 0^\circ$)	180°	1.76	250
Tilt-1	1	1	($-22.5^\circ, 0^\circ$), ($22.5^\circ, 0^\circ$)	45°	2.33	250
Tilt-1-FB10	10	1	($-22.5^\circ, 0^\circ$), ($22.5^\circ, 0^\circ$)	45°	-	50
Tilt-2	1	1	($0^\circ, -22.5^\circ$), ($0^\circ, 22.5^\circ$)	45°	-	50
Tilt-2-FB10	10	1	($0^\circ, -22.5^\circ$), ($0^\circ, 22.5^\circ$)	45°	-	50

NOTE—The simulation configurations and the stellar mass of the most massive DMDG formed: (1) run name, (2) stellar feedback energy, (3) initial metallicity of the gas disks, (4) angle by which each of the two colliding galactic disks is rotated about the $+x$ -axis (θ_1, θ_2) and about the $+y$ -axis (ϕ_1, ϕ_2), starting from its original position in the x - y plane (see the top left panel of Figure 1), (5) relative angle between the angular momentum vectors of the two galactic disks, (6) stellar mass within 12 kpc from the center of the most massive DMDG (“-” = no DMDG formed), (7) time since the pericentric approach of the two progenitor disks when we end the simulation.

[†] This is the fiducial run presented in all of the figures in this article. See Sections 2 and 3 for more information.

[‡] This is the run presented in the right panels of Figure 5 in Section 3.2.

of young massive clusters (YMCs) and/or GC candidates triggered by galaxy mergers in idealized simulations (Li et al. 2004; Bournaud et al. 2008; Kruijssen et al. 2011, 2012; Hopkins et al. 2013; Renaud et al. 2015; Maji et al. 2017; Moreno et al. 2019; Lahén et al. 2019, 2020) and in cosmological simulations (Li et al. 2017; Kim et al. 2018; Ma et al. 2020b). To validate the scenario by Silk (2019), we previously simulated idealized galaxy collisions using two different gravito-hydrodynamics codes and showed that $\sim 10^8 M_{\odot}$ DMDGs are produced when two gas-rich, dwarf galaxies collide with a relative velocity of $\sim 300 \text{ km s}^{-1}$ (Shin et al. 2020). However, the chosen resolution of 80 pc limited our ability to examine the inner structure of the resulting DMDGs, or to resolve the formation of their member SCs.

In this Letter, we examine the galaxy collision-induced DMDG formation scenario using adaptive mesh refinement (AMR) simulations with significantly improved 1.25 pc resolution. We not only demonstrate the DMDGs’ formation but also explore the detailed formation histories and the dynamical properties of the DMDG and their member SCs which could eventually evolve to bright GCs.

2. SIMULATIONS

The initial condition used for this study is similar to what was adopted in Shin et al. (2020) but with greatly improved particle resolution: a dark matter halo of mass $3.88 \times 10^9 M_{\odot}$ with a particle mass $1.55 \times 10^3 M_{\odot}$ each, a stellar disk of $4.21 \times 10^8 M_{\odot}$ with a particle mass $1.05 \times 10^3 M_{\odot}$ each, and a gas disk of $1.68 \times 10^9 M_{\odot}$. The initial gas fraction is thus $f_{\text{gas}} = M_{\text{gas}}/M_{\text{galaxy}} = 0.28$, but since $\sim 30\%$ of the gas is consumed before the collision, f_{gas} becomes ~ 0.2 when two galaxies collide at $t = 0$. Our Fiducial run is a coplanar prograde-prograde collision of the two identical galax-

ies with a relative velocity of $\sim 300 \text{ km s}^{-1}$ at a 40 kpc distance, and with a pericentric distance of 1 kpc (see Table 1).³ By varying the stellar feedback energy, initial gas metallicity, disk inclinations and spins, we form a suite of numerical experiments. The simulation configurations and the stellar masses of the resulting DMDGs are listed in Table 1.

The simulations are performed with the publicly available code ENZO (Bryan et al. 2014; Brummel-Smith et al. 2019) with the ZEUS hydrodynamics solver (Stone & Norman 1992a,b). Radiative gas cooling and heating rates along with the metagalactic UV background are computed by the GRACKLE library that interpolates the lookup table from CLOUDY (Smith et al. 2017). To describe feedback-regulated star formation, we employ the star-forming molecular cloud model (SFMC; for details, see Kim et al. 2013, 2019), a change from a simpler prescription in Shin et al. (2020). A particle representing a SFMC forms when (1) the density of a gas cell exceeds $4 \times 10^4 \text{ cm}^{-3}$, (2) the gas flow is converging, (3) the cooling time of the cell is shorter than its dynamical time (t_{dyn}), and (4) the created SFMC particle is heavier than $M_{\text{SFMC}} = 10^3 M_{\odot}$. Depicting inefficient star formation in molecular clouds (Krumholz & Tan 2007), the SFMC particle returns 80% of its original mass in $12 t_{\text{dyn}}$,⁴ together with thermal energy peaking at $1 t_{\text{dyn}}$ (four different energy choices for Fiducial to FB10 runs between 10^{51-52} ergs per

³ Readers should note that this initial condition models a rare type of hyperbolic galaxy collision events, but a type that does exist in a simulated universe such as IllustrisTNG (for details, see Shin et al. 2020).

⁴ The local star formation efficiency per free-fall time ($\epsilon_{\text{ff}} \sim 1\%$) is based on Kim et al. (2011, 2019). Other studies have also found that varying the SFE parameter by not more than an order of magnitude does not significantly affect the SC properties (Ma et al. 2020b; Li et al. 2020).

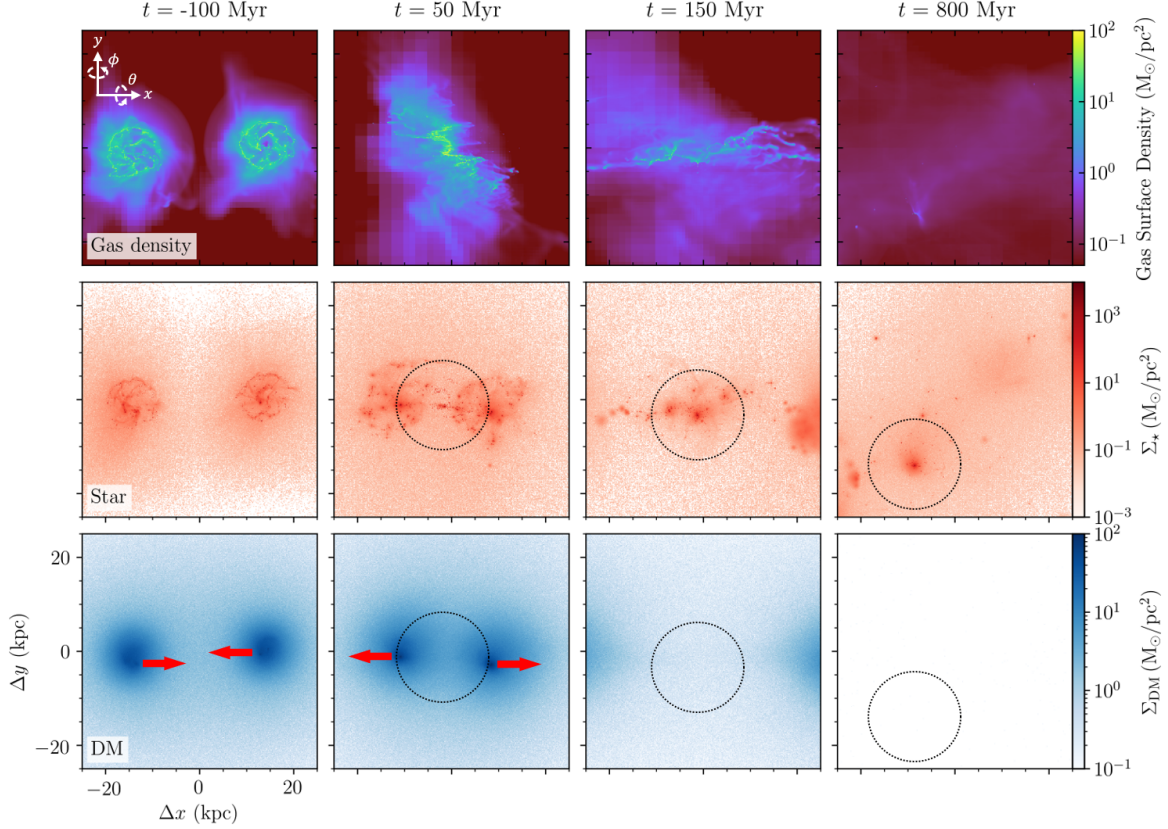


Figure 1. $t = -100, 50, 150, 800$ Myr snapshots of the fiducial, idealized collision of two identical gas-rich dwarf galaxies of $M_{200} = 5.95 \times 10^9 M_\odot$ each, and the resulting DMDGs (the Fiducial run in Table 1). Surface densities of gas (*top*), stars (*middle*) and dark matter (*bottom*). $t = 0$ is set to the moment when the two progenitor galaxies are at pericentric approach. The co-planar galaxy collision (i.e., both progenitor disks lying in the x - y plane) with a relative velocity of 300 km s^{-1} produces multiple DMDGs with stellar mass $\sim 10^8 M_\odot$ each. The dotted circles of 10 kpc radius are centered on the most massive DMDG produced. See Section 3.1 for more information.

150 M_\odot of stars formed) and metals (2% of the returned gas; see also Cen & Ostriker 1992; Kim et al. 2011).⁵

A pair of colliding galaxies is initialized in a $(1.311 \text{ Mpc})^3$ box of 64^3 root grid. We adaptively refine the galaxies up to level $l_{\text{max}} = 14$ achieving 1.25 pc resolution.⁶ After the two progenitor galaxies pass each other ($t = 100$ Myr), we refine the cells only in a pre-defined region that only includes the produced DMDGs. This RefineRegion is initially set

to a $(16 \text{ kpc})^3$ box containing the most massive DMDG throughout the run, and is surrounded by static nested boxes of cascading resolution from level 0 to 8. At level l , a cell splits into eight child cells whenever the cell contains more gas than $M_{\text{ref, gas}}^l = 2^{-0.554(l-14)} \times M_{\text{ref, gas}}^{14}$ or more particles than $M_{\text{ref, part}}^l = 2^{-0.387(l-14)} \times M_{\text{ref, part}}^{14}$ where $M_{\text{ref, gas}}^{14} = 2000 M_\odot \simeq 2 M_{\text{Jeans}}^{180\text{K}}$ and $M_{\text{ref, part}}^{14} = 4000 M_\odot = 4 M_{\text{SFMC}}$.

3. RESULTS

3.1. Collision-induced Dark Matter Deficient Galaxies (DMDGs): Kinematics and Morphology

Figure 1 shows the collision sequence of two gas-rich, dwarf galaxies approaching with a relative velocity of $\sim 300 \text{ km s}^{-1}$ (the Fiducial run in the first row of Table 1; similar to what was extensively tested in Shin et al. 2020). We define $t = 0$ as the time when the two galaxies are at pericentric approach. As shown in the top panels, we find that extremely dense gas clumps form during $t = 0 - 50$ Myr as the colliding columns of gas undergo severe shock compression near the first contact point (the center of each panel) and along the tidally stripped gas streams. The highly com-

⁵ While it is possible that the momentum imparted by supernovae could be underestimated in our thermal feedback model, the subgrid physics implementation adopted here have consistently shown that the star formation is efficiently self-regulated and the DMDGs are formed, across multiple resolution (resolution study at 80 pc, 5 pc, 1.25 pc, and 0.625 pc) and feedback strengths (Fiducial, FB3, and FB7 run in Table 1).

⁶ We create a relaxed galactic disk by gradually increasing the resolution for 250 Myr, thereby suppressing artificial starbursts: maximum spatial resolution = 80 pc for the first 100 Myr ($l_{\text{max}} = 8$), 20 pc for the next 100 Myr ($l_{\text{max}} = 10$), and 5 pc for the last 50 Myr ($l_{\text{max}} = 12$). The relaxation step ends at $t = -150$ Myr, the beginning of our 1.25 pc resolution simulation discussed in this article ($t = 0$ is when the two galaxies are at pericentric approach; see, e.g., Figure 4). During the relaxation, SFMC formation is either not allowed (i.e., dense gas clumps are supported only by the Jeans pressure floor) or allowed with a coarser-resolution recipe.

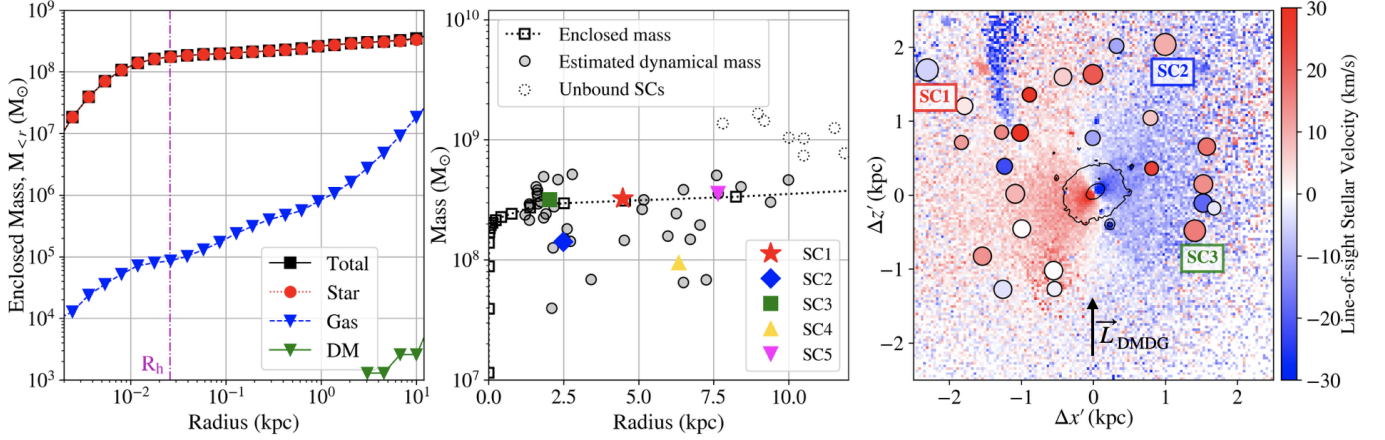


Figure 2. *Left:* the radial profile of enclosed masses in a logarithmic scale from the center of the most massive DMDG at $t = 800$ Myr in the Fiducial run. The DMDG consists of mostly stars, lacking in dark matter and gas. The vertical magenta line denotes the half-mass radius R_h of the DMDG. *Middle:* the dynamical mass within r estimated from the individual SC's circular velocity, $M_{<}(r) = r v_{\text{circ}}^2(r)/G$, now in a linear scale plot (*circles*). Among 42 gravitationally bound SCs the DMDG hosts, the five most massive SCs are shown with colored markers. For comparison, the true curve of the enclosed total mass is also included (*dotted line with squares*). *Right:* the line-of-sight stellar velocities in a $(5 \text{ kpc})^2$ box centered on the DMDG at $t = 800$ Myr, projected to a plane whose vertical coordinate (z') is aligned with the total angular momentum of the DMDG (\vec{L}_{DMDG}). Colored circles denote the location of SCs and their line-of-sight velocities with radii of $2(M_{\text{SC}}/M_{\odot})^{1/3}$ kpc. Two isosurface density contours are also shown: $\log[\Sigma_{\star}/(M_{\odot} \text{ pc}^{-2})] = 0$ and 1. See Section 3.1 for more information.

pressed gas clumps of $\Sigma_{\text{gas}} \sim 10^{3-4} M_{\odot} \text{ pc}^{-2}$ (see also Figure 3) — a typical value for extremely dense giant molecular clouds — invokes the formation of DMDGs and their member SCs (Kim et al. 2018; Lahén et al. 2020; Ma et al. 2020b). Strong bursts of star formation continue inside the gas clumps during $t = 50 - 150$ Myr (the middle row). The newly-formed stars remain near the first contact point and begin to form one or more gravitationally bound structures without the help of preexisting dark matter potentials. In contrast, the two dark matter halos simply pass through each other during this high-velocity collision. As a result, as seen in the bottom row of Figure 1, hardly any dark matter particle remains in the resulting DMDGs. Among the three DMDGs identified by the HOP halo finder (Efstathiou et al. 1985) in the Fiducial run, the most massive one has $M_{\star} \simeq 3.5 \times 10^8 M_{\odot}$ and almost no dark matter (see also Figure 2). In Figure 1, the most massive DMDG found is marked with a dotted circle in each panel. The DMDG drifts away slightly from the first contact point by $t = 800$ Myr (the fourth panels in each row).

Then in Figure 2, we present the dynamical properties of the most massive DMDG produced in the Fiducial run at $t = 800$ Myr. The left panel displays the radial profiles of the enclosed masses in different components: stars, gas, and dark matter. The DMDG primarily consists of stars and is nearly devoid of not only dark matter but also gas, which is in line with the reported gas-poor nature of DF2 ($M_{\text{gas,DF2}} \lesssim 3.15 \times 10^6 M_{\odot}$; Chowdhury 2019). The half-mass radius R_h of the DMDG's stellar body is 0.026 kpc, > 10 times smaller than that of a typical ultra diffuse galaxy

(~ 1.5 kpc) or that of DF2 (~ 2.2 kpc; van Dokkum et al. 2015, 2018b). It is, however, important to note that our simulated DMDGs evolved only for < 800 Myr in an idealized, isolated environment. Some morphological properties of a compact stellar object, such as M_{gas} and R_h could be sensitive to the energetic supernovae feedback (Trujillo-Gomez et al. 2021), or the tidal interaction with massive neighbors.⁷ R_h also changes frequently at this early stage of evolution as a number of new SCs in the outskirts leave the DMDG, or because of the dynamical relaxation or heating.

We now study the kinematics of SCs formed simultaneously with the DMDG that are identified by the HOP algorithm reconfigured to locate SCs. We fit each SC's stellar density profile to a power law, $\rho(r) = \rho_0 (1 + r^2/a^2)^{-(\gamma+1)/2}$ (Elson et al. 1987), and obtain its scale radius a . $R = 10a$ is adopted as the extent of each SC when we determine its physical quantities such as mass, half-mass radius, orbital velocity, average metallicity, and creation time. In the Fiducial run, a total of 50 SCs are found within 12 kpc from the center of the DMDG at $t = 800$ Myr; among them, 42 are gravitationally bound to the DMDG, and 8 are unbound. The middle panel of Figure 2 presents the dynamical mass within radius r estimated from each SC's circular velocity, $M_{<}(r) = r v_{\text{circ}}^2(r)/G$. Shown for comparison is the true curve of the DMDG's enclosed mass at r . It is notable

⁷ For example, the DMDGs formed in an isolated simulation may harbor more gas than DF2 does. However, Shin et al. (2020) demonstrated that if the simulated DMDG orbits around another massive galaxy, the tidal interaction could deprive the DMDG of most of its gas in a few Gyr.

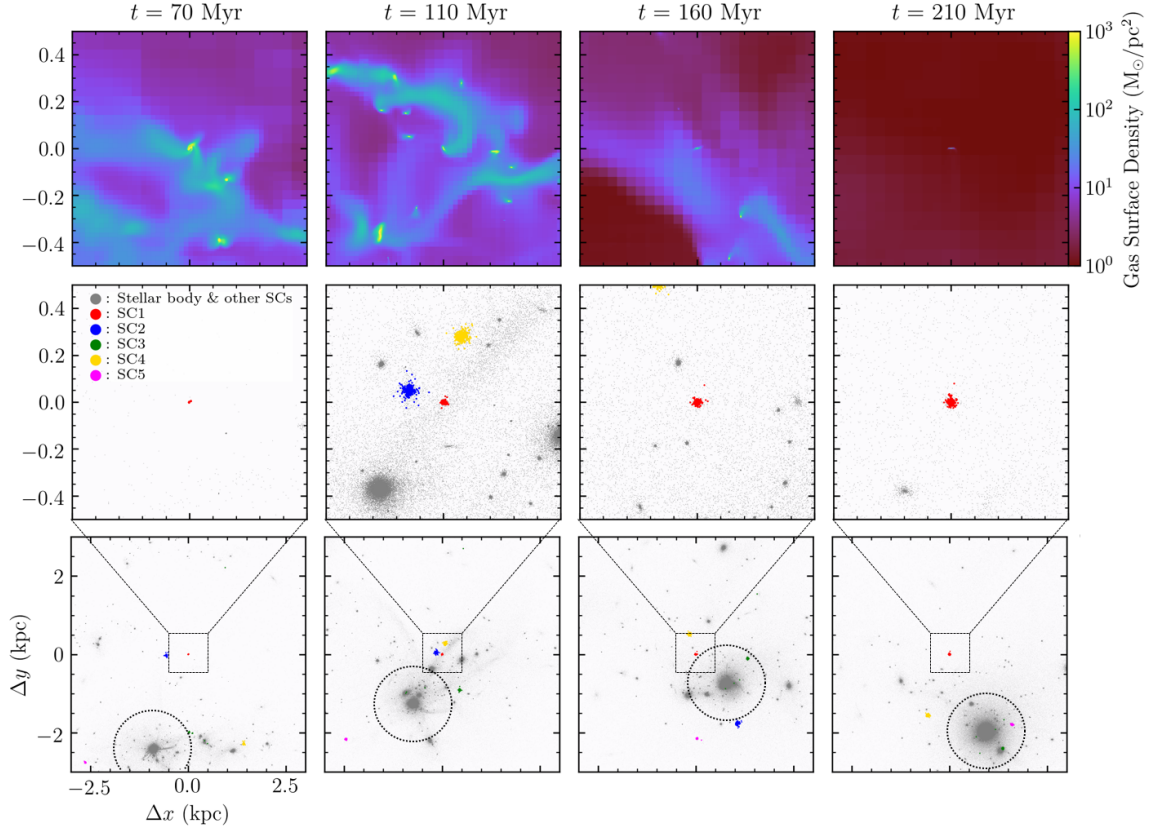


Figure 3. Similar to Figure 1, but zoomed in on the most massive SC (“SC1”) created around the most massive DMDG in the Fiducial run. $t = 70, 110, 160$ and 210 Myr snapshots of the gas surface density and stellar distribution in a $(1 \text{ kpc})^2$ box (*top* and *middle*), and in a $(6 \text{ kpc})^2$ box (*bottom*). The *red* dots in the *middle* and *bottom* panels denote the stars in SC1 (the same color codes and SCs as in Figure 2). The dotted circle of 1 kpc radius marks the location of the DMDG in each of the *bottom* panels. See Section 3.2 for more information.

that the dynamical masses estimated by the gravitationally bound SCs lie close to the true enclosed mass. This implies that the gravitationally bound “member” SCs of the DMDG are virialized, a key assumption when the dynamical masses of stellar systems are observationally evaluated.

In the right panel of Figure 2, we inspect the dynamical structure of the DMDG in the Fiducial run. It displays the line-of-sight velocities of the stars and SCs in the DMDG, viewed from an angle perpendicular to the angular momentum vector of the DMDG (\vec{l}_{DMDG}) at $t = 800$ Myr. We first find that the line-of-sight velocity dispersion of the 42 gravitationally bound SCs is $\sigma = 12.6 \text{ km s}^{-1}$. The 10 most luminous bound SCs ($M_V < -8.5$; see Figure 6 and Section 3.2) have $\sigma = 11.2 \text{ km s}^{-1}$. The small spread in velocity — smaller than what is normally expected by its stellar mass — is an indication that the resulting galaxy has a small dark matter to stellar mass ratio. Our finding is in line with the observed value of 8.4 km s^{-1} for the luminous SCs in DF2 (van Dokkum et al. 2018b) and 5.8 km s^{-1} in DF4 (van Dokkum et al. 2019), considering that the observation is conducted in an oblique plane. Second, from the “butterfly-shaped” line-of-sight velocities and the isosurface density contours,

we find that the DMDG is an oblate rotator with a major-to-minor axis ratio ~ 2 . The rotation velocity of the stars is $\sim 15 \text{ km s}^{-1}$ at $4 R_h < r < 10 R_h$ with a noticeable velocity gradient along the major axis of the system at $r \lesssim R_h$ ($v_{\text{circ, max}} \sim 35 \text{ km s}^{-1}$ at $r = 25 \text{ pc}$). For comparison, the stellar body of DF2 is reported to be a prolate rotator with a rotational velocity of $10.8 - 12.4 \text{ km s}^{-1}$ (Emsellem et al. 2019 and Lewis et al. 2020, respectively).

However, by comparing the *specific* angular momentum of the DMDG (\vec{l}_{DMDG}) and that of the system of 42 bound “member” SCs around the DMDG’s center (\vec{l}_{SC}), we discover that the SCs are not in a coherent rotation around the DMDG, nor preferentially in the disk plane of the DMDG. (i.e., $|\vec{l}_{\text{SC}}|/|\vec{l}_{\text{DMDG}}| = 0.042$). The rotation axis of the system of SCs about the DMDG — if it exists at all — is not aligned with that of the whole DMDG (i.e., \vec{l}_{SC} and \vec{l}_{DMDG} makes a 69° angle). The discrepancy in the dynamical states of the DMDG and the system of its member SCs could be attributed to their different formation processes (see Section 3.2).

Lastly, using the suite of simulations we performed (Table 1), we remark on how the formation of the collision-induced DMDGs depends on the simulation parameters: (1) First,

DMDGs form if a sufficiently large amount of gas participates in the supersonic collision and forms self-gravitating gas clumps. For example, in the Tilt-1 run, although the collision is no longer co-planar, a portion of the disk gas along the x -axis (see Figure 1) still clashes into a large column of gas in the other disk, producing two DMDGs. In contrast, in the Tilt-2 run, the disk gas finds only a small column of gas in the other disk during its first near head-on collision, so no DMDG forms (for quantitative discussion, see Section 3.3 of Shin et al. 2020). (2) The strength of stellar feedback affects the internal and kinetic energy of the ISM and dictates the DMDG formation. In the FB10 run where the feedback is 10 times more energetic than in the Fiducial run, clumps are easily dispersed via stellar feedback, with no DMDG formed. (3) The metallicity of the disk gas influences the DMDG formation. In the Low-metal run where the initial gas metallicity is set to $10^{-2} Z_{\odot}$ (100 times lower than in the Fiducial run), the relatively less metal-enriched gas slows down the gas cooling and suppresses star formation. As a result, the mass of the resulting DMDG is only 1/3 of what is found in the Fiducial run, hosting only 9 SCs (as opposed to 50 in the Fiducial run; see also Figure 5). (4) The velocity shear in the gas at the first contact surface affects the dynamical properties of the resulting DMDG. In the Fiducial run of a prograde-prograde collision, the ISM experiences a strong shear as the colliding columns of gas move in the opposite directions. Therefore, a DMDG is born in a clump that is in coherent rotation, resulting in a rotation-supported structure. In contrast, in the Retrograde run with a prograde-retrograde collision, the velocity vectors in the collapsing gas clumps are highly disordered, resulting in a DMDG with less rotation (i.e., $|\vec{v}_{\text{Retrograde}}|/|\vec{v}_{\text{Fiducial}}| \sim 0.1$).

3.2. Star Clusters in the Collision-Induced DMDGs: Formation History and Key Observables

We turn our attention to the formation history and the properties of SCs in the collision-induced DMDGs. Figure 3 again shows the collision sequence of the Fiducial run, but zooming in on the site where the most massive SC of the most massive DMDG was formed (“SC1”; red dots). After a large fraction of the disk gas loses its initial momentum during the first near head-on collision and stalls at the first contact surface, pockets of dense, shock-compressed gas emerge ($t = 50$ Myr panels in Figure 1). A few of these very dense clumps ($\Sigma_{\text{gas}} \gtrsim 10^{3-4} \text{ M}_{\odot} \text{ pc}^{-2}$) rapidly cool and collapse to spawn clusters of stars before or while the DMDG’s main stellar body forms ($M_{*, \text{SC}} \gtrsim 10^6 \text{ M}_{\odot}$ each; $t = 70$ Myr panels in Figure 3; Kim et al. 2018; Madau et al. 2020). As the clumps continue to turn gas into stars in the next ~ 50 Myr, they are fed by the accreting cold gas while the frequent supernova explosions from young SFMCs eject the hot gas out of the new SCs ($t = 110$ Myr panels in Figure 3; see also the

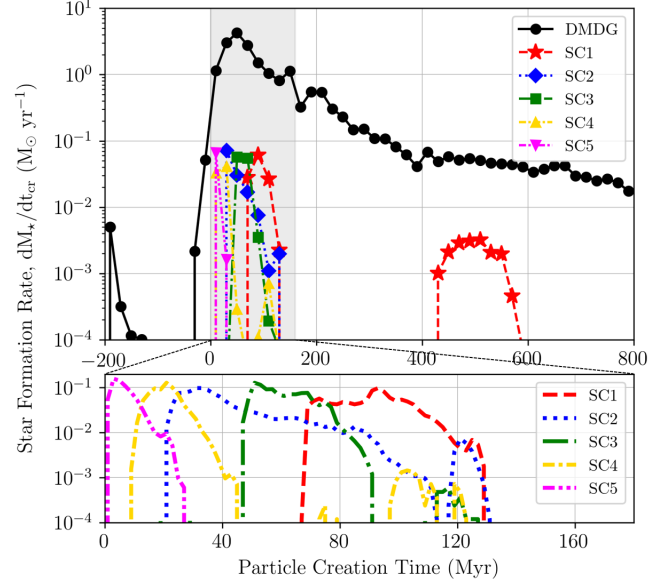


Figure 4. *Top:* the star formation history in the most massive DMDG and its five most massive member SCs in the Fiducial run (the same SCs and colored markers as in Figure 2). *Bottom:* zoomed in on the time that the five SCs are created. The five SCs and most of the stars in the DMDG’s stellar body form during $t = 0 - 150$ Myr, immediately after the progenitor galaxies’ pericentric approach. See Section 3.2 for more information.

bottom panel in Figure 4). The SCs consume or lose most of their gas by $t = 160$ Myr, and continue to orbit around the DMDG till the end of our simulation at $t = 800$ Myr.

Figure 4 presents the star formation history in the most massive DMDG of the Fiducial run and its five most massive member SCs. Most of the stars in the DMDG and the five SCs are born in < 150 Myr after the progenitor galaxies’ pericentric approach ($t = 0 - 150$ Myr), which is consistent with our earlier studies (Shin et al. 2020). After the initial burst of star formation, the DMDG maintains to form stars at a modest pace ($\sim 10^{-1} - 10^{-2} \text{ M}_{\odot} \text{ yr}^{-1}$), while none of the massive SCs form additional stars at a meaningful rate after $t = 150$ Myr as they are nearly devoid of gas. The widths of star formation peaks for these SCs are ~ 50 Myr, significantly narrower than that of the DMDG.

Then in Figure 5, we make scatter plots of all the SCs formed with the DMDG on the plane of the stellar mass versus the average metallicity, and on the plane of the average creation time versus the average metallicity. The left panels are for the Fiducial run and the right panels are for the Low-metal run (note that the Low-metal run with the initial metallicity of $10^{-2} Z_{\odot}$ produces 9 SCs compared to 50 in the Fiducial run; see Table 1 and Section 3.1 for more information). In the bottom panels, we also denote the average creation time and metallicity of the stellar body of the DMDG with a black circle. Two observations could be made. First, we find that the average metallicity of a SC correlates

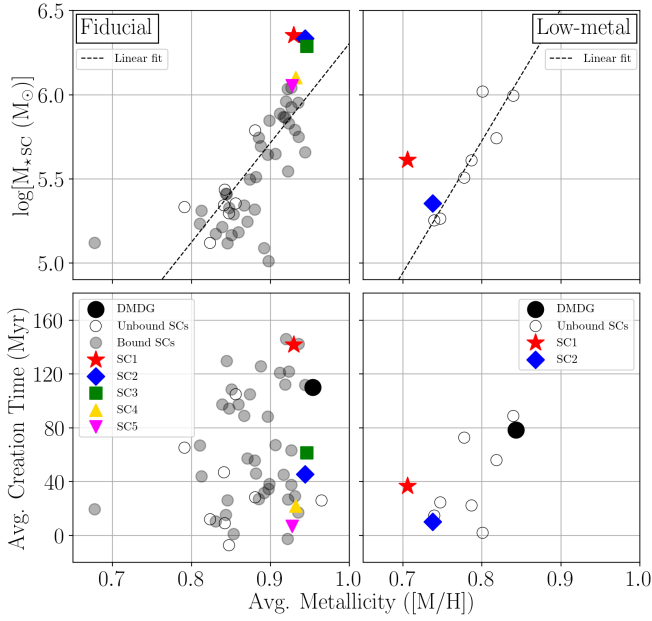


Figure 5. *Top:* the stellar masses versus the average metallicities of the SCs formed in the DMDG. *Bottom:* the average creation times versus the average metallicities of the SCs. The *left* panels are for the *Fiducial* run (42 bound + 8 unbound SCs) and the *right* panels are for the *Low-metal* run (2 bound + 7 unbound SCs). Selected massive SCs are shown with the colored markers (the same SCs and markers as in Figures 2 and 4 for the *Fiducial* run). The average metallicities of SCs are correlated with their masses. We also denote the average creation time and metallicity of the DMDG as a whole with a black circle in the bottom panels. In the *Low-metal* run, the stars in the DMDG is more metal-enriched than the two bound SCs. See Section 3.2 for more information.

positively with its mass (top row) rather than with its creation time (bottom row). We argue that since a massive SC creates more stars which consequently injects more metals into the ISM, and retains a higher fraction of supernova ejecta in its deeper gravitational potential well, the next generations of stars in the SC inherit higher metallicities from the metal-enriched ISM (Bailin & Harris 2009; Fensch et al. 2014). Therefore, the more massive a SC is, the higher its average stellar metallicity is. Second, readers may note that in the *Low-metal* run, the average metallicity of the DMDG is higher than that of the two bound SCs (colored markers in the bottom right panel). A similar discrepancy is observed in DF2: $[M/H] \sim -1.07$ for DF2’s stellar body and ~ -1.63 for its SCs (Fensch et al. 2019). The higher metallicity in the DMDG’s main stellar body could be attributed to the continuing star formation after the initial starburst. The later generations of stars formed in the more metal-enriched ISM raise

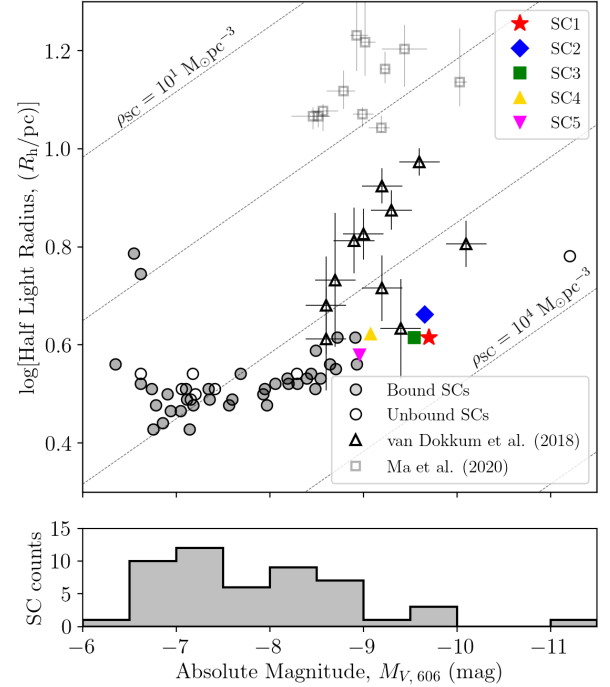


Figure 6. *Top:* the absolute magnitudes (M_V) versus the half-light radii of the SCs formed in the most massive DMDG in the *Fiducial* run. M_V is estimated from the SC’s mass, assuming the mass-to-light ratio $M/L_V = 2$. The five most massive SCs are shown with the colored markers (the same SCs and markers as in Figures 2, 4 and 5). We overplot the luminous GCs located in DF2 ($M_V < -8.5$; triangles from van Dokkum et al. 2018c; squares from Ma et al. 2020a); here the half-light radii and M_V in the *F606W* band are used. See Section 3.2 for more information.

the average stellar metallicity of the DMDG, while the SCs’ metallicities rarely change once the initial starburst ceases.⁸

Finally, we analyze the individual characteristics of the SCs, such as their luminosities. Figure 6 shows the scatter plot on the plane of the absolute magnitude (M_V) versus the half-light radius ($=$ half-mass radius R_h) for all the SCs in the most massive DMDG of the *Fiducial* run. The absolute magnitude of a SC is estimated from its mass, assuming a typical constant mass-to-light ratio $M/L_V = 2$ (e.g., van Dokkum et al. 2018c). The SC masses plotted in Figure 6 range from 1.2×10^5 to $9.0 \times 10^6 M_\odot$. Among them, 32 gravitationally bound SCs are with $-8.5 < M_V < -6.5$, while 10 bound SCs are with $M_V < -8.5$. For comparison, we include the luminous SCs observed in DF2 ($M_V < -8.5$; van Dokkum et al. 2018c; Ma et al. 2020a). The absolute magnitudes of the luminous SCs are similar in our *Fiducial* run and DF2. Note that the peak of our cluster luminosity function (the bottom panel of Figure 6) lies between the

⁸ Note that this trend is found only in the *Low-metal* run, but not in the *Fiducial* run where the initial gas metallicity is already set to $1Z_\odot$.

peaks of the Milky Way’s GCLF and DF2’s (van Dokkum et al. 2018c).⁹ We argue that the extremely dense, shock-compressed gas clumps induced by the high-velocity galaxy collision could give rise to multiple luminous SCs — a scenario considered by Trujillo-Gomez et al. (2020, 2021) and demonstrated with simulations by Kim et al. (2018) and Madau et al. (2020). Meanwhile, the half-light radii R_h of the simulated SCs are 1.5 – 3.0 times smaller than the estimated radii of the GCs in DF2. As was for R_h of our simulated DMDG, it is important to note that our simulated SCs evolved only for < 800 Myr. If evolved for a sufficiently long time, the radii of SCs could change due to, e.g., the dynamical heating by their host galaxy.¹⁰

4. CONCLUSION

The diffuse dwarf galaxies DF2 and DF4, with their alleged absence of dark matter and multiple luminous member GCs, have been a topic of intense debate as the astrophysical community tries to comprehend their formation mechanism. Using a suite of high-velocity galaxy collision simulations with 1.25 pc resolution, we have demonstrated that such a collision induces the formation of the DMDGs with $M_\star \sim 10^8 M_\odot$. With numerical resolution significantly improved from our previous study (Shin et al. 2020), we resolve the dynamical structure of the produced DMDGs and find that a co-planar prograde-prograde galaxy collision can produce a compact, rotation-supported, oblate DMDG. We have also resolved and studied the massive SCs forming simultaneously with the DMDGs, which later could become progenitors of GCs. A galaxy collision with a high relative velocity of $\sim 300 \text{ km s}^{-1}$ creates pockets of severely shock-compressed gas that rapidly turn into multiple luminous SCs ($M_\star \gtrsim 10^6 M_\odot$, $M_V \lesssim -8.5$ mag) that are in line with the observed GCs in DF2. The majority of stars in the DMDGs and their SCs form less than 150 Myr after the progenitor galaxies’ pericentric approach. Many properties of the observed

DMDGs’ GCs are reproduced. In our Fiducial run, 10 luminous, gravitationally bound, virialized SCs have a line-of-sight velocity dispersion 11.2 km s^{-1} . In the Low-metal run with the initial gas metallicity of $10^{-2} Z_\odot$, the DMDG shows a higher average stellar metallicity than the SCs.

Our study suggests that a high-velocity galaxy collision is a promising candidate for the simultaneous formation of DMDGs and their luminous member GCs. In the forthcoming studies, we aim to examine the galaxy collision-induced DMDG formation scenario with more sophisticated subgrid physics that fully takes into account the evolution of interstellar medium due to energetic stellar feedback with even higher resolution (see footnote 5), in a cosmological context for ~ 10 Gyr, comparable to DF2’s age (~ 9 Gyr; van Dokkum et al. 2018c; Fensch et al. 2019) designed to follow its later evolution.

The authors would like to thank J  r  my Fensch, Yongseok Jo, Taysun Kimm, Myung Gyoon Lee, Boon Kiat Oh, Joseph Silk, Sebastian Trujillo-Gomez, and Sukyoung Yi for insightful discussions. Ji-hoon Kim acknowledges support by Samsung Science and Technology Foundation under Project Number SSTF-BA1802-04, and by the POSCO Science Fellowship of POSCO TJ Park Foundation. His work was also supported by the National Institute of Supercomputing and Network/Korea Institute of Science and Technology Information with supercomputing resources including technical support, grants KSC-2019-CRE-0163 and KSC-2020-CRE-0219. The publicly available ENZO and yt codes used in this work are the products of collaborative efforts by many independent scientists from numerous institutions around the world. Their commitment to open science has helped make this work possible.

Software: yt (Turk et al. 2011), ENZO (Bryan et al. 2014; Brummel-Smith et al. 2019), the GRACKLE chemistry and cooling library (Smith et al. 2017), numpy (Oliphant 2006), scipy (Virtanen et al. 2020), matplotlib (Hunter 2007)

REFERENCES

- Bailin, J., & Harris, W. E. 2009, *ApJ*, 695, 1082, doi: [10.1088/0004-637X/695/2/1082](https://doi.org/10.1088/0004-637X/695/2/1082)
- ⁹ 84 (Milky Way) / 4 (DF2) GCs are with $-8.5 < M_V < -6.5$, and 20 (Milky Way) / 11 (DF2) GCs are with $M_V < -8.5$.
- ¹⁰ For example, Gnedin et al. (1999) showed that during orbital passages near the host galaxy, GCs could be dynamically heated by the host. We also note that the detailed dynamics of supernova blast waves or remnants is not fully resolved with 1.25 pc resolution (or SFMC particle of $\gtrsim 200 M_\odot$), making it difficult to accurately estimate the disruption time scale and the inner structure of each SC. This warrants an even higher-resolution simulation.
- Bournaud, F., Duc, P. A., & Emsellem, E. 2008, *MNRAS*, 389, L8, doi: [10.1111/j.1745-3933.2008.00511.x](https://doi.org/10.1111/j.1745-3933.2008.00511.x)
- Brummel-Smith, C., Bryan, G., Butsky, I., et al. 2019, *Journal of Open Source Software*, 4, 1636, doi: [10.21105/joss.01636](https://doi.org/10.21105/joss.01636)
- Bryan, G. L., Norman, M. L., O’Shea, B. W., et al. 2014, *ApJS*, 211, 19, doi: [10.1088/0067-0049/211/2/19](https://doi.org/10.1088/0067-0049/211/2/19)
- Cen, R., & Ostriker, J. P. 1992, *ApJL*, 399, L113, doi: [10.1086/186620](https://doi.org/10.1086/186620)
- Chowdhury, A. 2019, *MNRAS*, 482, L99, doi: [10.1093/mnras/sly192](https://doi.org/10.1093/mnras/sly192)

- Danieli, S., van Dokkum, P., Abraham, R., et al. 2020, *ApJL*, 895, L4, doi: [10.3847/2041-8213/ab8dc4](https://doi.org/10.3847/2041-8213/ab8dc4)
- Efstathiou, G., Davis, M., White, S. D. M., & Frenk, C. S. 1985, *ApJS*, 57, 241, doi: [10.1086/191003](https://doi.org/10.1086/191003)
- Elson, R. A. W., Fall, S. M., & Freeman, K. C. 1987, *ApJ*, 323, 54, doi: [10.1086/165807](https://doi.org/10.1086/165807)
- Emsellem, E., van der Burg, R. F. J., Fensch, J., et al. 2019, *A&A*, 625, A76, doi: [10.1051/0004-6361/201834909](https://doi.org/10.1051/0004-6361/201834909)
- Fensch, J., Mieske, S., Müller-Seidlitz, J., & Hilker, M. 2014, *A&A*, 567, A105, doi: [10.1051/0004-6361/201423971](https://doi.org/10.1051/0004-6361/201423971)
- Fensch, J., van der Burg, R. F. J., Jeřábková, T., et al. 2019, *A&A*, 625, A77, doi: [10.1051/0004-6361/201834911](https://doi.org/10.1051/0004-6361/201834911)
- Gnedin, O. Y., Lee, H. M., & Ostriker, J. P. 1999, *ApJ*, 522, 935, doi: [10.1086/307659](https://doi.org/10.1086/307659)
- Hopkins, P. F., Cox, T. J., Hernquist, L., et al. 2013, *MNRAS*, 430, 1901, doi: [10.1093/mnras/stt017](https://doi.org/10.1093/mnras/stt017)
- Hunter, J. D. 2007, *Computing in Science & Engineering*, 9, 90, doi: [10.1109/MCSE.2007.55](https://doi.org/10.1109/MCSE.2007.55)
- Jackson, R. A., Kaviraj, S., Martin, G., et al. 2021, *MNRAS*, 502, 1785, doi: [10.1093/mnras/stab093](https://doi.org/10.1093/mnras/stab093)
- Kim, J.-h., Krumholz, M. R., Wise, J. H., et al. 2013, *ApJ*, 775, 109, doi: [10.1088/0004-637X/775/2/109](https://doi.org/10.1088/0004-637X/775/2/109)
- Kim, J.-h., Wise, J. H., Abel, T., et al. 2019, *ApJ*, 887, 120, doi: [10.3847/1538-4357/ab510b](https://doi.org/10.3847/1538-4357/ab510b)
- Kim, J.-h., Wise, J. H., Alvarez, M. A., & Abel, T. 2011, *ApJ*, 738, 54, doi: [10.1088/0004-637X/738/1/54](https://doi.org/10.1088/0004-637X/738/1/54)
- Kim, J.-h., Ma, X., Grudić, M. Y., et al. 2018, *MNRAS*, 474, 4232, doi: [10.1093/mnras/stx2994](https://doi.org/10.1093/mnras/stx2994)
- Kruijssen, J. M. D., Pelupessy, F. I., Lamers, H. J. G. L. M., et al. 2012, *MNRAS*, 421, 1927, doi: [10.1111/j.1365-2966.2012.20322.x](https://doi.org/10.1111/j.1365-2966.2012.20322.x)
- Kruijssen, J. M. D., Pelupessy, F. I., Lamers, H. J. G. L. M., Portegies Zwart, S. F., & Icke, V. 2011, *MNRAS*, 414, 1339, doi: [10.1111/j.1365-2966.2011.18467.x](https://doi.org/10.1111/j.1365-2966.2011.18467.x)
- Krumholz, M. R., & Tan, J. C. 2007, *ApJ*, 654, 304, doi: [10.1086/509101](https://doi.org/10.1086/509101)
- Lahén, N., Naab, T., Johansson, P. H., et al. 2019, *ApJL*, 879, L18, doi: [10.3847/2041-8213/ab2a13](https://doi.org/10.3847/2041-8213/ab2a13)
- . 2020, *ApJ*, 891, 2, doi: [10.3847/1538-4357/ab7190](https://doi.org/10.3847/1538-4357/ab7190)
- Lewis, G. F., Brewer, B. J., & Wan, Z. 2020, *MNRAS*, 491, L1, doi: [10.1093/mnras/slz157](https://doi.org/10.1093/mnras/slz157)
- Li, H., Gnedin, O. Y., Gnedin, N. Y., et al. 2017, *ApJ*, 834, 69, doi: [10.3847/1538-4357/834/1/69](https://doi.org/10.3847/1538-4357/834/1/69)
- Li, Y., Mac Low, M.-M., & Klessen, R. S. 2004, *ApJL*, 614, L29, doi: [10.1086/425320](https://doi.org/10.1086/425320)
- Li, H., Vogelsberger, M., Marinacci, F., Sales, L. V., & Torrey, P. 2020, *MNRAS*, 499, 5862, doi: [10.1093/mnras/staa3122](https://doi.org/10.1093/mnras/staa3122)
- Ma, J., Wang, S., Wang, S., et al. 2020a, *MNRAS*, 496, 3741, doi: [10.1093/mnras/staa1775](https://doi.org/10.1093/mnras/staa1775)
- Ma, X., Grudić, M. Y., Quataert, E., et al. 2020b, *MNRAS*, 493, 4315, doi: [10.1093/mnras/staa527](https://doi.org/10.1093/mnras/staa527)
- Madau, P., Lupi, A., Diemand, J., Burkert, A., & Lin, D. N. C. 2020, *ApJ*, 890, 18, doi: [10.3847/1538-4357/ab66c6](https://doi.org/10.3847/1538-4357/ab66c6)
- Maji, M., Zhu, Q., Li, Y., et al. 2017, *ApJ*, 844, 108, doi: [10.3847/1538-4357/aa7aa1](https://doi.org/10.3847/1538-4357/aa7aa1)
- Monelli, M., & Trujillo, I. 2019, *ApJL*, 880, L11, doi: [10.3847/2041-8213/ab2fd2](https://doi.org/10.3847/2041-8213/ab2fd2)
- Moreno, J., Torrey, P., Ellison, S. L., et al. 2019, *MNRAS*, 485, 1320, doi: [10.1093/mnras/stz417](https://doi.org/10.1093/mnras/stz417)
- Ogiya, G. 2018, *MNRAS*, 480, L106, doi: [10.1093/mnras/sly138](https://doi.org/10.1093/mnras/sly138)
- Oliphant, T. E. 2006, *A guide to NumPy*, Vol. 1 (Trelgol Publishing USA)
- Renaud, F., Bournaud, F., & Duc, P.-A. 2015, *MNRAS*, 446, 2038, doi: [10.1093/mnras/stu2208](https://doi.org/10.1093/mnras/stu2208)
- Ruiz-Lara, T., Trujillo, I., Beasley, M. A., et al. 2019, *MNRAS*, 486, 5670, doi: [10.1093/mnras/stz1237](https://doi.org/10.1093/mnras/stz1237)
- Shen, Z., van Dokkum, P., & Danieli, S. 2021a, *ApJ*, 909, 179, doi: [10.3847/1538-4357/abdd29](https://doi.org/10.3847/1538-4357/abdd29)
- Shen, Z., Danieli, S., van Dokkum, P., et al. 2021b, *ApJL*, 914, L12, doi: [10.3847/2041-8213/ac0335](https://doi.org/10.3847/2041-8213/ac0335)
- Shin, E.-j., Jung, M., Kwon, G., et al. 2020, *ApJ*, 899, 25, doi: [10.3847/1538-4357/aba434](https://doi.org/10.3847/1538-4357/aba434)
- Silk, J. 2019, *MNRAS*, 488, L24, doi: [10.1093/mnras/slz090](https://doi.org/10.1093/mnras/slz090)
- Smith, B. D., Bryan, G. L., Glover, S. C. O., et al. 2017, *MNRAS*, 466, 2217, doi: [10.1093/mnras/stw3291](https://doi.org/10.1093/mnras/stw3291)
- Stone, J. M., & Norman, M. L. 1992a, *ApJS*, 80, 753, doi: [10.1086/191680](https://doi.org/10.1086/191680)
- . 1992b, *ApJS*, 80, 791, doi: [10.1086/191681](https://doi.org/10.1086/191681)
- Trujillo, I., Beasley, M. A., Borlaff, A., et al. 2019, *MNRAS*, 486, 1192, doi: [10.1093/mnras/stz771](https://doi.org/10.1093/mnras/stz771)
- Trujillo-Gomez, S., Kruijssen, J. M. D., Keller, B. W., & Reina-Campos, M. 2020, *arXiv e-prints*, arXiv:2010.05930, <https://arxiv.org/abs/2010.05930>
- Trujillo-Gomez, S., Kruijssen, J. M. D., & Reina-Campos, M. 2021, *arXiv e-prints*, arXiv:2103.08610, <https://arxiv.org/abs/2103.08610>
- Turk, M. J., Smith, B. D., Oishi, J. S., et al. 2011, *ApJS*, 192, 9, doi: [10.1088/0067-0049/192/1/9](https://doi.org/10.1088/0067-0049/192/1/9)
- van Dokkum, P., Danieli, S., Abraham, R., Conroy, C., & Romanowsky, A. J. 2019, *ApJL*, 874, L5, doi: [10.3847/2041-8213/ab0d92](https://doi.org/10.3847/2041-8213/ab0d92)
- van Dokkum, P., Danieli, S., Cohen, Y., Romanowsky, A. J., & Conroy, C. 2018a, *ApJL*, 864, L18, doi: [10.3847/2041-8213/aada4d](https://doi.org/10.3847/2041-8213/aada4d)
- van Dokkum, P., Danieli, S., Cohen, Y., et al. 2018b, *Nature*, 555, 629, doi: [10.1038/nature25767](https://doi.org/10.1038/nature25767)
- van Dokkum, P., Cohen, Y., Danieli, S., et al. 2018c, *ApJL*, 856, L30, doi: [10.3847/2041-8213/aab60b](https://doi.org/10.3847/2041-8213/aab60b)

- van Dokkum, P. G., Abraham, R., Merritt, A., et al. 2015, ApJL, 798, L45, doi: [10.1088/2041-8205/798/2/L45](https://doi.org/10.1088/2041-8205/798/2/L45)
- Virtanen, P., Gommers, R., Oliphant, T. E., et al. 2020, Nature Methods, 17, 261, doi: [10.1038/s41592-019-0686-2](https://doi.org/10.1038/s41592-019-0686-2)